



MESSKO[®] MLog[®]

TRANSPORT MONITORING
FOR HIGHEST STANDARDS.

WWW.REINHAUSEN.COM



MESSKO® MLog® – PREMIUM TRANSPORT MONITOR FOR YOUR GOOD(S).

In the globalization era with its worldwide networking of multimodal transport routes, it is crucial to track and monitor shipments continuously.

There is an increasing trend the world over to transport goods around the globe by land, sea and air on a daily basis. During the journey to their destination, the goods to be transported are exposed to a wide variety of influences and impacts such as heat, vibrations and centrifugal forces. Regardless of this, the aim of every transport process is to deliver the goods to the destination undamaged and eliminating manipulation.

The MESSKO® MLog® offers the perfect solution for reliable transport tracking and condition monitoring of shipments, goods and valuables of all types.

The MESSKO® MLog® on a mission



High-tech cargo fully monitored: Cyclotron, the world's first super-conducting accelerator made by Varian Medical Systems for the treatment of cancer and tumors.



The MESSKO® MLog® was used for monitoring the transport of the Cyclotron, a medical equipment worth 15 million Euros.



The heavy cargo logistic provider Arnold Schwerlast GmbH & Co. KG was in charge of the transport of the 100 ton heavy Cyclotron from Cologne/Germany to San Diego/USA.

MESSKO® MLog® ADVANTAGES AT A GLANCE.

Security of data

- Optional password protection at three levels
- Tamper-proof data format



Durability / robustness

- UV and seawater-resistant
- Oil-resistant
- Protection class IP65
- No extra protective housing necessary
- Temperature resistant

Efficient energy supply using standard batteries

- Storage capacity and energy supply last for a period of up to one year
- Dangerous goods identification is not necessary, due to the use of conventional batteries and not types containing lithium

Operational safety

- Self-test
- Calibration service provided by Messko
- Update service for device software and MESSKO® MLog® software

User-friendly software and hardware

- Self-explanatory user interface and PC software
- User-definable installation position
- Ergonomic keys
- Clearly readable display
- LED lights for condition monitoring

MESSKO® MLog® IM50/IM100

| Features | MLog® IM50 Basic-Control | MLog® IM100 Premium-Control |
|---|-----------------------------|--------------------------------|
| Acceleration / shock (X, Y, Z axis) | ✓ | ✓ |
| Ambient temperature | ✓ | ✓ |
| Ambient humidity | ✓ | ✓ |
| Display | x | ✓ |
| GPS / position (optional) | ✓ | ✓ |
| 6 universal inputs (optional) | x | ✓ |
| 2 digital inputs (optional) | x | ✓ |
| Bluetooth module / wireless PC communication (optional) | x | ✓ |
| GSM module / communication (optional) | x | ✓ |

THE MESSKO® MLog® – SETTING NEW STANDARDS.



The MESSKO® MLog® stores and visualizes a large number of parameters, events and limit violations and makes them transparent for both carrier and customer. In addition to acceleration in 3 orthogonal directions (X-, Y-, Z-axis), it also records parameters such as ambient temperature and relative humidity. Non-critical vibrations for the transport goods can be filtered out. The MESSKO® MLog® can optionally be extended with additional, freely parameterizable analog and digital inputs. Thanks to the GPS function, the load can be tracked anywhere in the world and the transport route can be traced back in order to find the location of any events that may have occurred during the shipment. If required, the MESSKO® MLog® version IM100 can be supplied with a Bluetooth and GSM module to enable wireless data transfer and communication. The GSM module ensures direct communication with MESSKO® MLog® wherever the device is located.



The use of standard high-quality batteries guarantees that the device will function for up to a year. Another advantage: the MESSKO® MLog® is not subject to any transport restrictions, such as is the case of comparable devices operated with lithium batteries.

With the MLog®, Messko offers a transport monitoring device precisely tailored to the customer's needs - robust, compact, easy to operate and of high-quality material. Another product from the Messko-quality range.



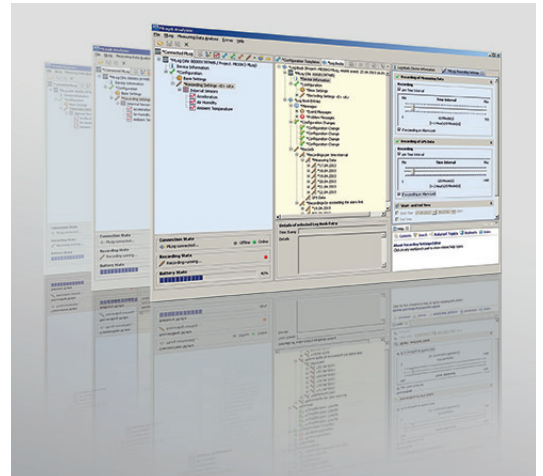
Scope of supply MESSKO® MLog®

- MESSKO® MLog® Transport Monitor
- Software licence MESSKO® MLog® Analyser (Parameterization/data visualization software)
- Mini USB cable
- Batteries for startup
- Assembly kit

MESSKO® MLog® ANALYSER.

The "MESSKO® MLog® Analyser" software can be used for convenient parameterization of the MESSKO® MLog® device from a PC via a USB interface or Bluetooth connection (password required) and for analyzing the recorded data. Password protection is optional and may be divided into three password levels which enable the owner to assign rights (inspection of data or parameterization of equipment) according to authorization.

The authentication required by the user guarantees maximum security against tampering. Data loading, storage, or processing is therefore protected against any interference from external sources. A summary report (PDF format) of a transport can be created with a simple mouse click and sent to the customer for evidence purposes.



| MESSKO® MLog® IM50/IM100 | Technical Data | |
|--------------------------|---|---|
| | Measured value for acceleration | |
| Sensor type | 3-Axis-Acceleration sensor, -16g ... +16g | |
| | Measured value for temperature | |
| Measuring range | -40° C ... +125° C | |
| | Measured value for relative humidity | |
| Measuring range | 0 ... 100%rF | |
| | GPS module (optional) | |
| Transmission values | Longitude, latitude; worldwide | |
| | GSM module, optional (IM100 only) | |
| Protocols | GSM/GPRS/EDGE | |
| | Digital inputs, optional (IM100 only) | Universal inputs, optional (IM100 only) |
| Number | Max. 2 inputs | Max. 6 inputs |
| Nominal voltage | < 0.8 V / > 2.4 V | 0-5 VDC |
| | Data memory | |
| Time | Coordinated Universal Time UTC (date/time) | |
| Event memory | 125,000 events (64 byte/event) | |
| Shock memory | 400 shock events (1.9 s/shock), 1.6 kHz sampling rate | |
| | Interfaces | |
| USB | Mini USB, B type | |
| Bluetooth | Optional (IM100 only) | |
| | Display and operating elements | |
| Display | LCD display, black/white, 128x128 pixels, transreflective (IM100 only) | |
| Status LEDs | 1 green „ACTIVE“, 1 yellow „BATTERY“, 1 red „EVENT/ALARM“ | |
| Buttons | IM100: 10 buttons, gold-plated stainless steel contacts / IM50: 2 buttons, gold-plated stainless steel contacts | |
| Software | MLog® Analyser, Software for parameterization and analysis | |
| | Operating conditions | |
| Protection class | IP 65 | |
| Ambient temperature | -40° C ... +80° C | |
| | Housing | |
| Dimensions (w x h x d) | 297 mm x 196 mm x 59 mm | |
| Weight | 1.8 kg | |
| Materials | Basic housing: Luran S, protectors: Softell TKS, resistant to weathering and aging; good resistance to chemicals | |

Messko GmbH

Gewerbegebiet An den Drei Hasen
Messko-Platz 1
61440 Oberursel, Germany

Phone: +49 6171 6398 0

Fax: +49 6171 6398 98

Email: info-messko@reinhausen.com

www.reinhausen.com/messko

Please note:

The data in our publications may differ from
the data of the devices delivered. We reserve
the right to make changes without notice.

IN 3080502/02 EN – MESSKO® MLog® –
78155202 - 08/18 – ©Messko GmbH 2018

THE POWER BEHIND POWER.

